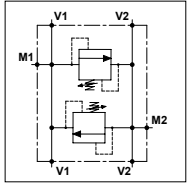


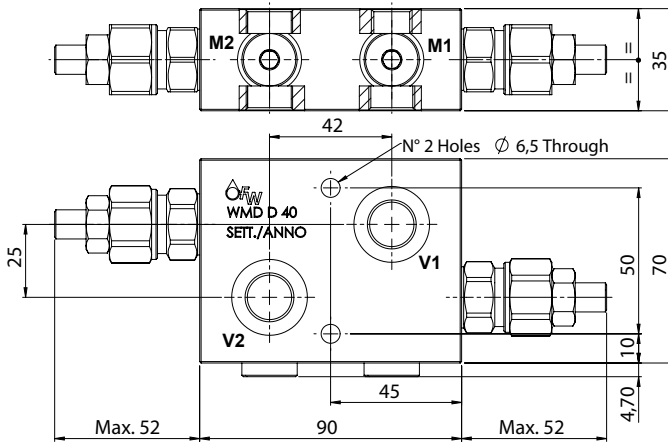
WMD D 40


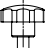

TECHNICAL DATA

- **Flow:** 40 l/min
- **Max setting pressure:** 350 bar
- **Max working pressure:** 250 bar (350 bar)
- **Materials:** Aluminium Body (Steel Body if required)
- **Weight:** 0,800 kg (1,600 kg)

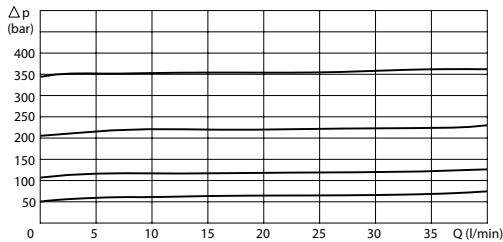


PORTS		
V1 - V2	3/8	1/2
M1 - M2	1/4	



REGULATOR	
(S) Screw	
(V) Handknob	
OPTION	
(X) Tamper Proof Cap	

PRESSURE DROP CURVES



SPRINGS

Code	Adjustable pressure range bar	Pressure increase bar/turn	Standard setting bar
05	5-55	15	5
10	25-110	25	25
20	50-215	50	50
35	100-350	90	100

ORDERING CODE



- | | | | | |
|--------------------|-----------------------|---------------------------|-----------------|--------------------------------|
| Ports Size: | Material Body: | Type of Regulator: | Springs: | Adjustment if Required: |
| - 3/8 | - Omit if | - S = Screw | - 05 | - Omit if not |
| - 1/2 | aluminium | - V = Handknob | - 10 | required |
| | - S = Steel | | - 20 | - Value |
| | | | - 35 | - Value with X |