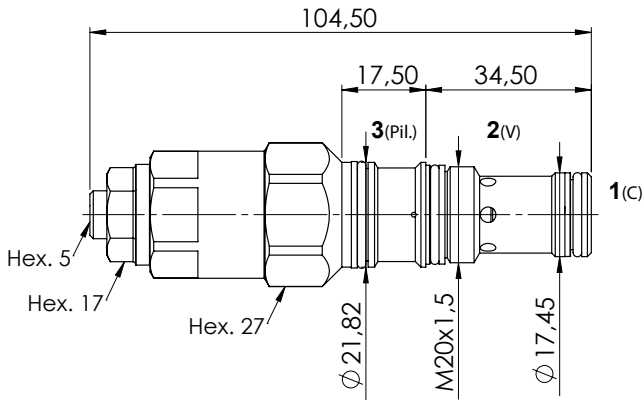
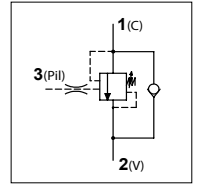


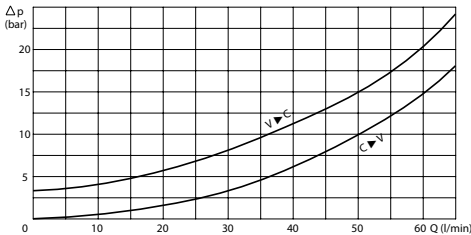
WOC 60 T11

TECHNICAL DATA

- **Flow:** 60 l/min
- **Max working pressure:** 350 bar
- **Materials:** Cartridge in Steel zinc plated
- **Pilot ratio:** 4:1
- **Cavity:** FW20000310
- **Installation torque:** 60-65 Nm
- **Weight:** 0,240 kg



PRESSURE DROP CURVES



SPRINGS

Code	20			35		
	Adjustable pressure range bar	Pressure increase bar/turn	Standard setting bar	Adjustable pressure range bar	Pressure increase bar/turn	Standard setting bar
4:1						

ORDERING CODE

WOC

60

T11

Springs:

- 20
- 35

Adjustment if Required:

- Omit if not required
- Value